



TEC EVENT CAMPUS

OLD INDUSTRY - MODERN EVENT SPACE

TEC EVENT CAMPUS



TEC EVENT CAMPUS

Wohlrabedamm 7 - 13629 Berlin

Mail event@tec-event-campus.com

Fon +49 30 470 807 00

www.tec-event-campus.com



KEY FACTS

approx. 1.450 m² barrier-free indoor event space

- daylight in each space
- non-equipped for the maximum of flexibility
- permissible floor load of 1.5 t per m²
- approved place of public assembly as defined by german law
- historical industrial building

approx. 2.900 m² outdoor space

- 60 parking spaces
additionally 2 parking spaces
for people with disabilities



Main entrance (stairs + lift) + outdoor gallery
> access to Front Hall



MAIN HALL - View to Front Hall

> on the left side - gate to bring in vehicles (w280 cm x h310 cm)



MEASUREMENTS + LIST PRICES

Location	Space	Height	Level	List price per day*
Entire venue	1.458 m ²	up to 5,10 m	Ground floor	17.500 €
Entire venue incl. Outdoor	4.358 m ²	-	Ground floor + Outdoor	20.500 €
Main Hall +	834 m ²	up to 5,10 m	Ground floor	14.500 €
Front Hall	382 m ²	up to 5,10 m	Ground floor	with Main Hall
Meeting 1	121 m ²	up to 5,10 m	Ground floor	3.500 €
Meeting 2	121 m ²	up to 5,10 m	Ground floor	3.500 €
Outdoor Front	1.100 m ²	-	Outdoor	2.500 €
Outdoor Railway	1.800 m ²	-	Outdoor	3.000 €
Catering	50 m ²	3 m	Basement	free of charge
Storage 1	53 m ²	3 m	Basement	750 €
Storage 2	38,5 m ²	3 m	Basement	600 €



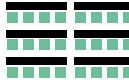



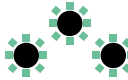





All specifications are subject to change and have to be inspected on-site.

* All prices are net prices and are exclusive of VAT. Additionally we charge costs for power, water, staff and cleaning. 50% of the list price will be charged for set-up and dismantling days.

**Please let us know if renting TEC Event Campus is interesting for you.
We would be pleased to draft you an individual offer.**



SEATING VARIATIONS

Space	Stage								
		Pax		Pax		Pax		Pax	
Main Hall	ahead	800	8	442	4	621	6	505	5
Main Hall	side	800	8	453	5	614	6	535	5
Meeting 1		100	2	58	2				
Meeting 2		100	2	58	2				

The maximum capacity for the venue is 1.000 people. The seating numbers are benchmarks and may depend on the concept and set-up.

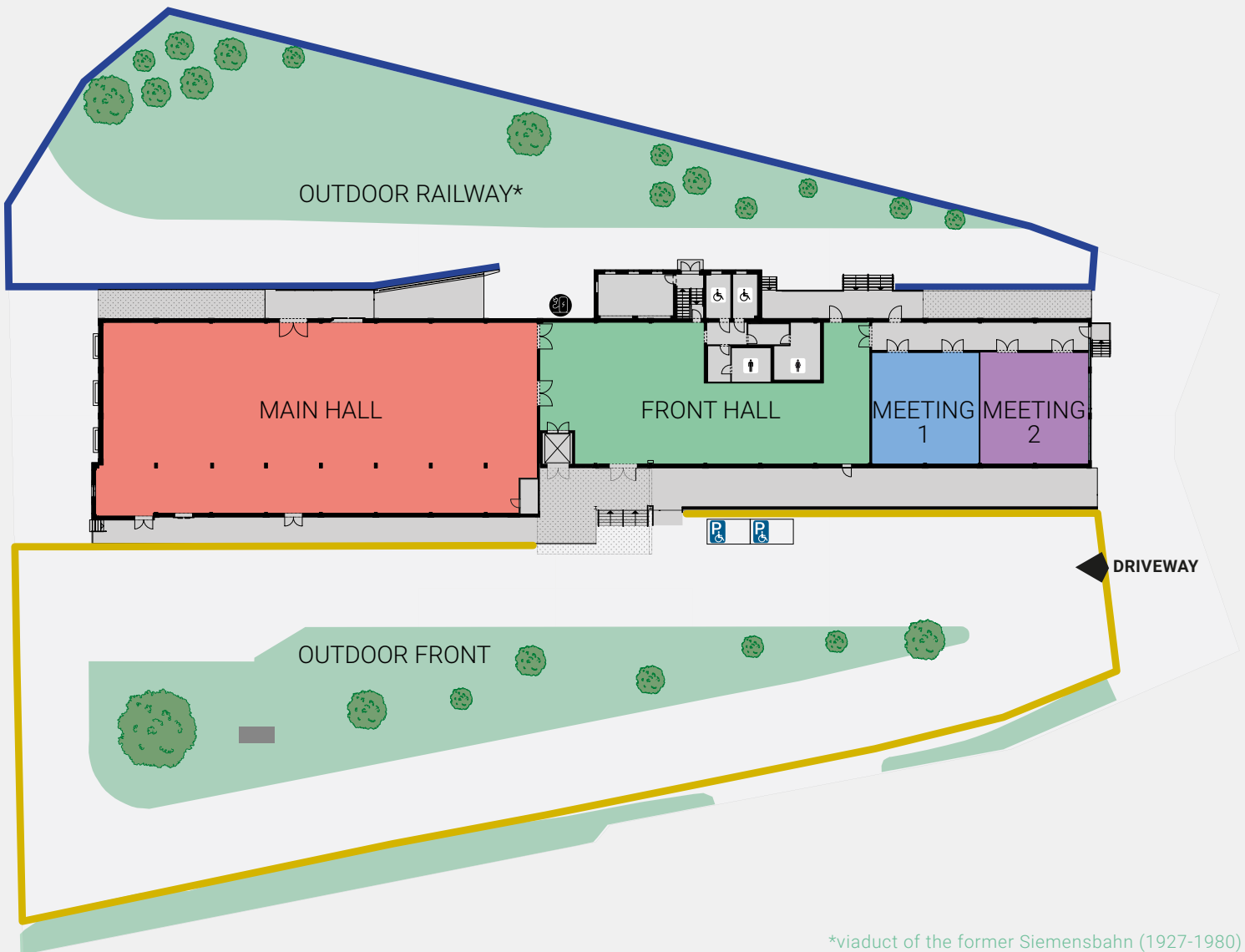


MAIN HALL - view from Front Hall

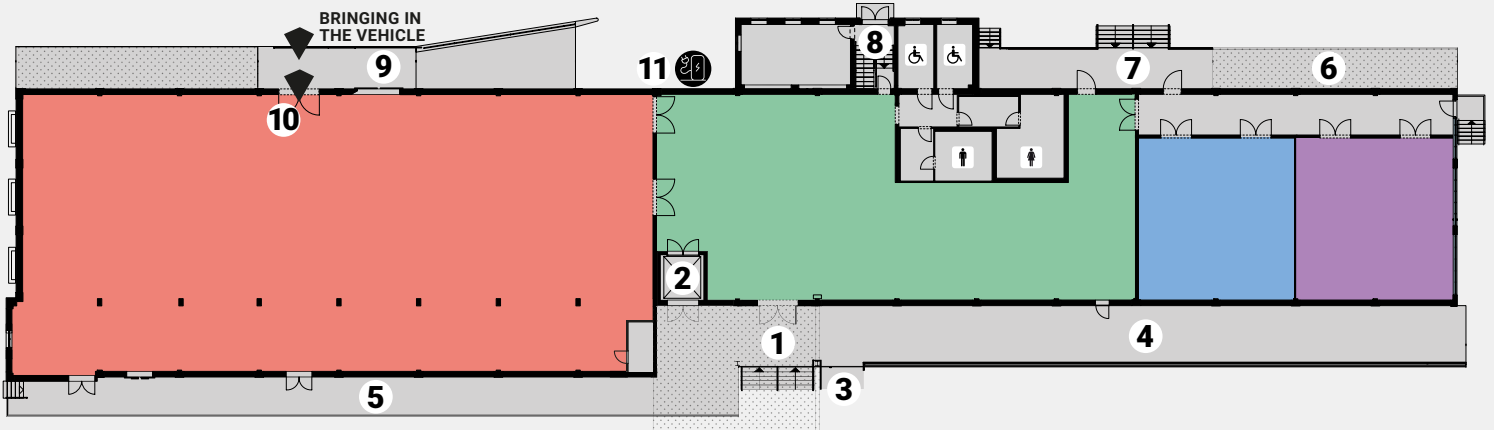
> main stage with LED wall ahead, chair rows, middle stage and stands for guests on the side



OVERVIEW



FLOOR PLAN - GROUND FLOOR



■ Main Hall

Space: 834 m²
 Hight: up to 5,10 m
 max. capacity: 1.000 people

■ Front Hall

Space: 382 m²
 Hight: up to 5,10 m

Access to the WC

Ladies - 9 cabins
 Gentleman - 4 cabins + 6 urinals
 barrier-free WC - 2

■ Meeting 1

Space: 121 m²
 Hight: up to 5,10 m

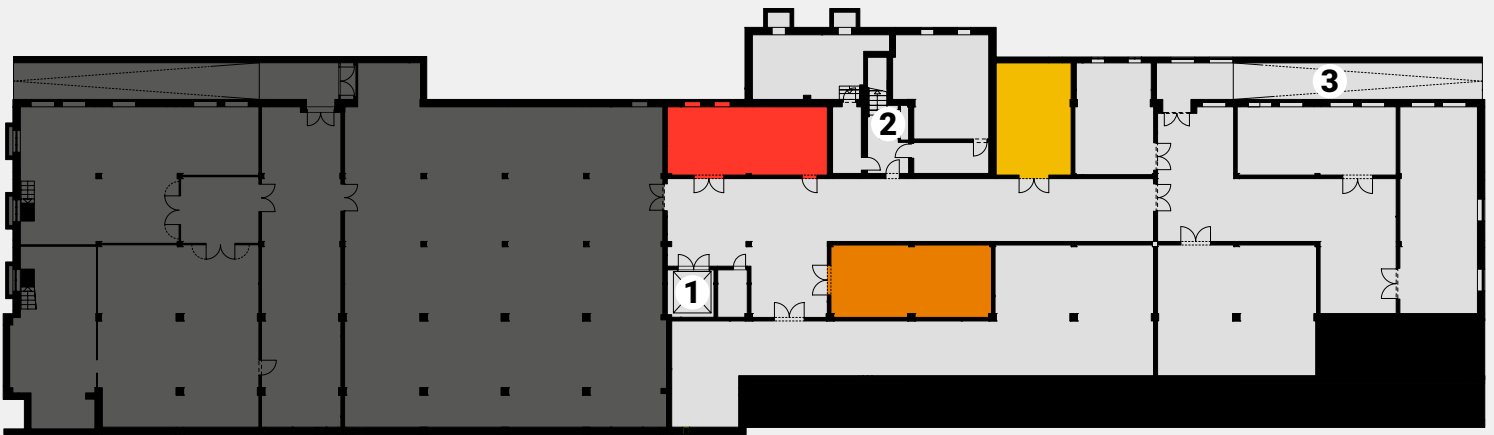
■ Meeting 2

Space: 121 m²
 Hight: up to 5,10 m

- 1 Main entrance with canopy
- 2 Goods lift (3t load) with a ccess to the foyer and the space in front of the main entrance
- 3 Lift to the main entrance (length 1,43 m x width 0,90 m)
- 4 Ramp to the main entrance (10% gradient)
- 5 Outdoor gallery space (approx. 120 m²) with access to Main Hall
- 6 Ramp to storage space in the basement (12,5% slope)
- 7 Access to the Outdoor Railway
- 8 Stairecase to basement
- 9 Access-ramp to Hall (10% gradient) with the possibility to bring in vehicles for presentation
- 10 Gate for bringing in vehicles (width 2,80 m x height 3,07 m)
- 11 wallbox (22 kW, incl. 6 m cable Typ2)



FLOOR PLAN - BASEMENT



Catering
Space: 50 m²
Height: 3 m

Storage 1
Space: 53 m²
Height: 3 m

Storage 2
Space: 38,5 m²
Height: 3 m

- 1 Good lift (3t load)
- 2 Staircase to Front Hall
- 3 Ramp to the outdoor (12,5% gradient)



TEC EVENT CAMPUS

SERVICES

BEVERAGE CATERING



From a welcome coffee at the beginning of the event to a long drink during the get-together in the evening - our beverage packages offer you full flexibility and are created individually according to your event concept.

For saving valuable resources and in terms of sustainability, we do only serve our drinks from glass bottles and pay attention to social added value when selecting providers.

BRANDING - BANNER



At TEC Event Campus we offer nine banner spaces along the facade of the venue, which can be used for event-related advertising as well as for presentations of partner logos or as press wall.

The main banner spaces ranging in size from 14.60 m² to 32.20 m² and facing the entrance to the TEC Event Campus area.

The other banners are located along the access way to the main entrance of the venue (see image).

ALL-INCLUSIVE



At your request, we can handle the coordination, management and billing of partner services for event technology, food catering and equipment including decoration.

A handling fee will be charged for each final order of the respective partner services.

This allows us to offer you an almost all-inclusive package as part of the venue rental.

Event conception and guests management are excluded from this service.



TEC EVENT CAMPUS

IMPRESSIONS



Outdoor Railway

> in the back - ramp to Main Hall



Front Hall - view to the toilets cube

> on the left side - access to Main Hall | on the right side - main entrance



Meeting 1 - view from the corridor

> lounge seating with stage



Main Hall - access to Front Hall on the left side

> mixed seating with stage

VIRTUAL TOUR TEC EVENT CAMPUS





OUR OTHER VENUES

CAFE MOSKAU



At the heritage listed Cafe Moskau there are in total 12 event spaces from 60 m² to 446 m² on 2 floors.

The light-flooded Moskau hall (upper floor) and Almaty hall (ground floor) are the core of the venue.

Further there are two outdoor areas, Atrium and Rosengarten.



KEYFACTS

- 2.600 m² event space
- capacity for 1.200 Pax
- daylight in all event spaces
- mobile partition systems
- up to 433 Pax in theater seating
- free of furniture, event technology and food catering



*Accessibility tested

CAFEMOSKAU.COM

Address: Karl-Marx-Allee 34 | 10178 Berlin

SALON BABETTE



The former beauty salon „Babette“ was built in the early 1960s and is nowadays used as a bar and modern event spaces.

Room Madona (ground floor) is a multifunctional room with a fixed bar, lounge furniture and a event technology set-up.

Room Elva (upper floor) is setted as a lounge space.

KEYFACTS

- 126 m² event space
- capacity for 100 Pax
- fully glazed on 3 sides
- free of food catering
- furniture by our partner Party Rent Berlin



SALONBABETTE.COM

Address: Karl-Marx-Allee 34 | 10178 Berlin



TEC EVENT CAMPUS

CONTACT + PARTNERS

LOCATION

TEC Event Campus
Wohlrabedamm 7
13629 Berlin

OFFICE

TEC Event Campus GmbH
Milastraße 2
10437 Berlin

SECURITY

FSB-Security – Jörn Ullmann
Mail joern.ullmann@fsb-security.com

FURNITURE + DECORATION

Party.Rent
Juliane Seidel + Isabel Haverkamp
Mail juliane.seidel@party.rent
isabel.haverkamp@party.rent
Fon +49 30 200 061 525 8

EVENT TECHNOLOGY

AMBION GmbH
Christian Rathgeber-Fietzke + Lars Hiesener
Mail tec@ambion.de
Fon +49 30 726 278 412 1

CATERING

Fuchs + Gans GmbH
Gernot Karger + Paula Möhring
Mail info@fuchsundgans.com
Fon +49 30 804 935 69

Hoflieferanten Berlin

Michael Lammert
Mail lammert@hoflieferanten.berlin
Fon +49 30 200 086 611

REQUESTS + VISITS

Sales Team
Mail event@tec-event-campus.com
Fon +49 30 470 807 00

PRODUCTION QUESTIONS

Productions Team
Mail produktion@tec-event-campus.com

HOTEL

Amano Group
up to 10 rooms – Izabella Lugin
Mail lugin@amanogroup.com

more than 10 rooms – Monique Belling
Mail belling@amanogroup.com

DRIVER SERVICE

BerlinMobil Frank Richert GmbH
Doreen Plischkaner
Mail plischkaner@berlinmobil.de
Fon +49 30 422 199 14

Kochbox-Event Berlin GmbH
Katharina Müller
Mail info@kochbox.com
Fon +49 30 857 426 16

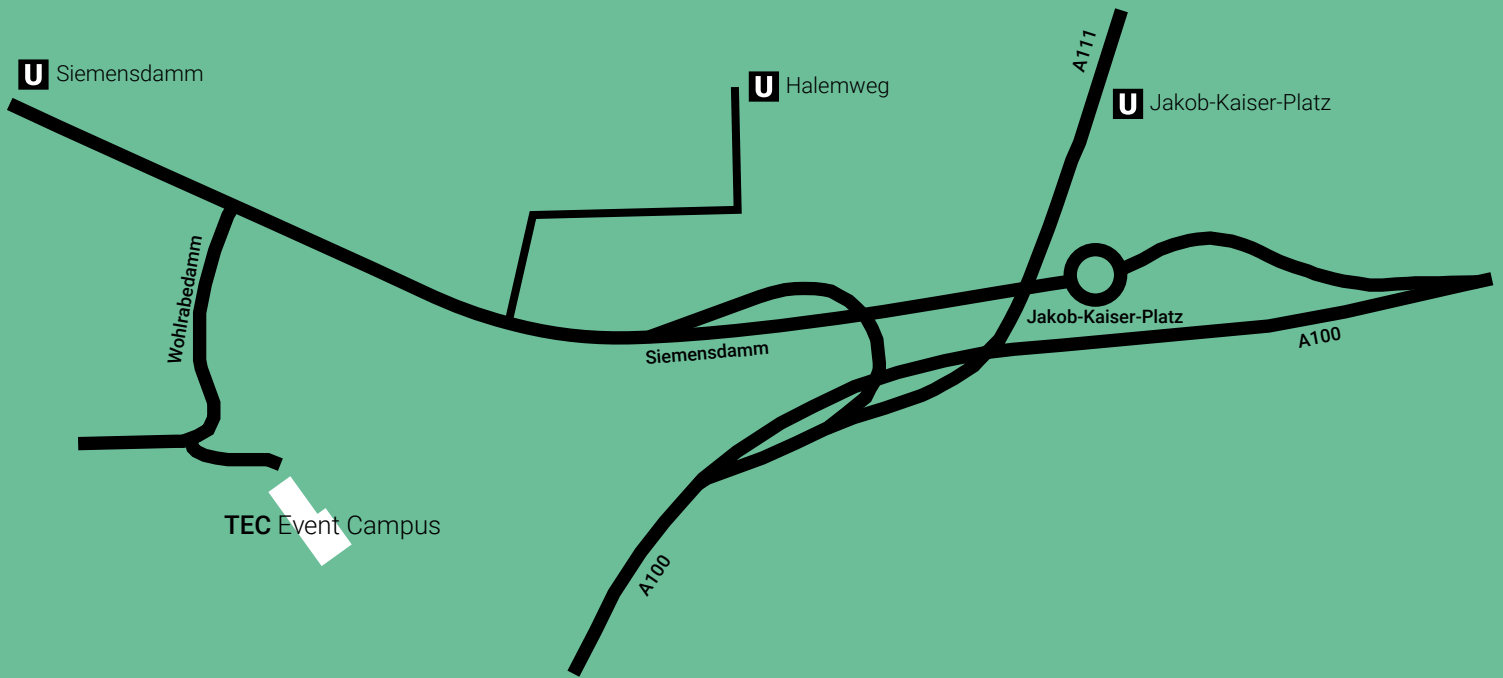
Wild & Wiese GmbH & Co. KG

Ralf Dekorsy
Mail ralf.dekorsy@wildundwiese.de
Fon +49 30 657 779 01



TEC EVENT CAMPUS

ARRIVALS



TEC Event Campus - Wohlrabadamm 7 - 13629 Berlin.

Public transport

U-Bahnhof Siemensdamm (U7)
U-Bahnhof Jakob-Kaiser-Platz (U7)
U-Bahnhof Halemweg (U7)

Arrivals

approx. 10 min from Messe Berlin
approx. 40 min from BER Airport

Parking

The outdoor space offers space for up to 60 vehicles.

Our member- + partnerships

